



TOBACCO WASTE AND COLLEGE CAMPUSES

What You Need to Know and How Litter Cleanups Can Strengthen Policy Work

Kim Homer Vagadori, MPH
California Youth Advocacy Network
April 20, 2015



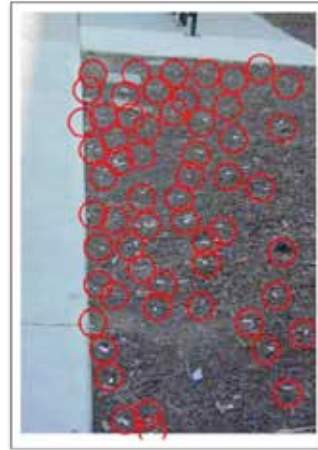
Tobacco Waste Cleanups

- Use tobacco waste cleanups and scans throughout the process of smoke/tobacco-free policy campaigns
 - Advocacy
 - Implementation
 - Education and Cessation



Advocacy

- Environmental Scans
 - Monitor where tobacco waste is on campus
 - Shows problem areas
 - Identify certain students/staff that may have higher rates of tobacco use
 - Policy compliance
 - Are people complying with the current policy?
 - Are ash cans and signage in compliance with policy?



Advocacy

- Tobacco waste cleanups
 - Problem areas = advocacy stories
 - Example: a lot of waste near childcare center, tobacco waste and wild life
 - Changes in use by season, time of school year, etc.
 - Document and show problems to decision makers





Pre-Implementation

- Collect data to see problem before policy is implemented
- Identify areas in need of increased signage
 - Hot spots
- Identify locations in need of increased education and cessation promotion

Survey/Assessment Form

College/University: _____
 Campus: _____ Site or Location: _____
 Date: _____ Survey Date: _____

Type of Policy Desired:
 No Policy
 No Smoking Policy
 No Smoking Policy for certain areas only
 No Smoking Policy for certain areas only
 No Smoking Policy for certain areas only
 No Smoking Policy for certain areas only

A. Signage

1. Why is signage needed in this area? (Please describe the location and the area.)

2. How many signs are needed in this area? (Please describe the signs.)

3. How many signs are needed in this area? (Please describe the signs.)

B. Education/Cessation

1. How many signs are needed in this area? (Please describe the signs.)

2. How many signs are needed in this area? (Please describe the signs.)

3. How many signs are needed in this area? (Please describe the signs.)



Post-Implementation



- Continually identify hot spots and problem areas
 - Need to change signage? Add signage?
 - Increase education?
 - Promote cessation?
 - Remove ash cans?
 - Begin enforcement?



Post-Implementation

- Document change
 - Amount of smoking/tobacco use on campus
 - Quantity of littered waste
 - Cleaner and healthier areas
- Educate decision makers on successes
 - Decreased use on campus
 - Cleaner campus
 - Fewer fires
 - Less staff time cleaning up littered waste



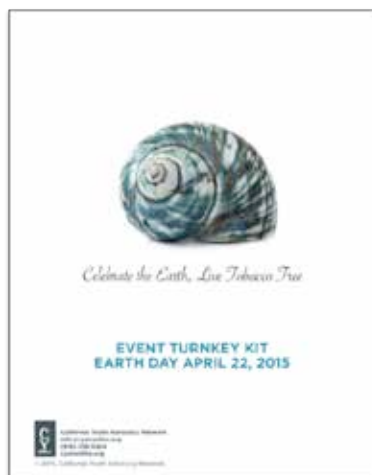
Education and Cessation

- Opportunity to identify what products students, staff, and visitors are using (e.g., menthol, cigarillos, etc.)
 - Focus education on products people are using
 - Focus cessation on products people are using (e.g., smokeless tobacco vs. cigarettes)
- Engage all community members in cleanups so they can [see](#) the problem
- Educate campus community on how tobacco impacts the environment





For more information...



Contact:

Kim Homer Vagadori, MPH

CYAN

(916) 339-3424 x22

kim@cyanonline.org

Resources:

- Tobacco-Free Policy Toolkit
- College Organizing Guide
- Cessation Toolkit for Colleges

Website:

- www.cyanonline.org